

Medical Manufacturing

SOLUTIONS THAT MAKE  
**HEALTHCARE**  
**WORK**



**EASILY SHOP**  
By clicking  
on product

Click Product to  
SHOP NOW!

SOLUTIONS THAT MAKE HEALTHCARE WORK

# SMALL PARTS WITH A BIG IMPACT

Unlike many distributors who simply take orders, Reid Supply staff offers you a deep knowledge about the product lines we carry. We are proactive in helping you manage your procurement cycles and supply chain, taking the extra steps to make you aware of changes in supply or manufacturers' offering. We can help you identify or find 'equivalent' products should there ever be supply issues.



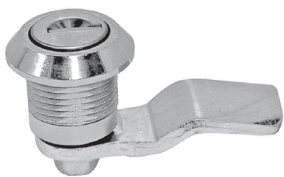
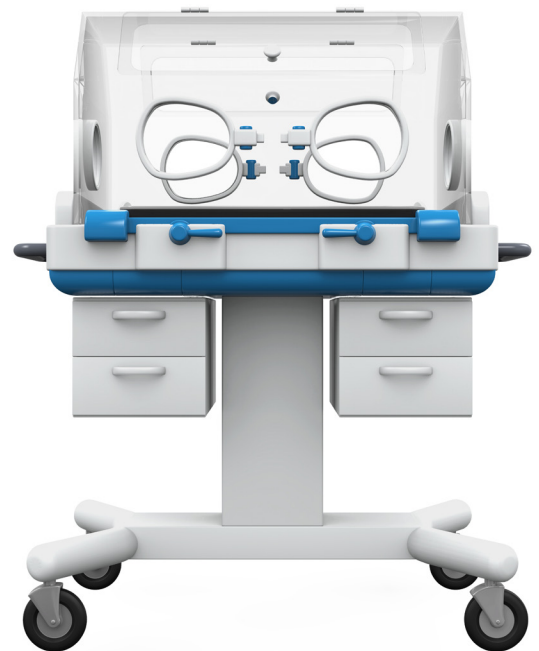
## ACCESS SOLUTIONS

These pressure release latches provide venting in the event of internal explosion and maintain a seal in order to prevent loss of heat and/or escape of gasses under normal conditions. Latches have an adjustable strike and the release force is adjustable.



### ADJUSTABLE TORQUE HINGES

Torque hinges have an adjustable holding torque with the aid of a setting key. The hinge articulates and holds a panel in position thus eliminating the need for a gas strut or lid stay.



### CAM LOCKS

Cam locks are available with a variety of types, key rotation angle, and grip ranges.



### GASKET SEALS

Gasket seals offer protection from vibrations, ingress of humidity and dirt.

## LEVELING FEET

Our selection of leveling feet for the clean environment industry incorporate polished 304 stainless steel, along with smooth surfaces to reduce dust and dirt build up.



[CLICK FOR A QUOTE](#)  
4 HOURS OR LESS



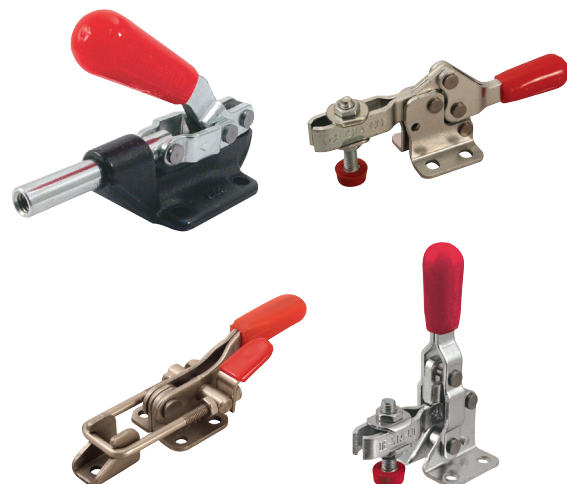
# WORKHOLDING SOLUTIONS

Easy-to-use options for fixture building/testing, welding and assembly operations in medical manufacturing markets. They provide quick swing-and-clamp movement for increased productivity when working on medical equipment. New models that feature enclosed cam track that can clamp and toggle-lock in the pull-down closed position.

## Destaco Stainless Steel Models

DESTACO's stainless steel product offering are suitable for many applications that demand a clamp that is more robust than traditional steel models and are well-suited pharmaceutical manufacturing and other high temperature or harsh environments. They offer greater capabilities in a cost-effective package.

Destaco offers toggle clamp models fabricated with corrosion, chemical and heat resistant stainless steel. These clamp models are used in many applications where corrosion is a problem.



# MOTION CONTROL

**Click Product to SHOP NOW!**

You'll find more than 250 round, lobed, marked, bar, clamping knobs, handwheels and handle pulls made from impact and chemical resistant materials for a neat appearance for finished applications that require adjustment in medical equipment.



### ROTARY DAMPERS WITH GEAR

Rotary dampers with gear control the speed and acceleration of a movement in a travelling body. Simple to install, they can be fitted as part of an assembly. Available in a range of torques and gear profiles.



### ADJUSTABLE CLAMPING HANDLE

Ideal to make tightening adjustment and indexing. The handle design is appropriate for clamping and releasing with the press down button.



### INDEX PLUNGER

Used for locating, positioning. Index plungers allow for rapid adjustments on a variety of fixtures and tables such as medical equipment.



### HANDWHEELS

Metal straight control hand wheels without Handles provide a leveraging hand hold even when the machine operator is wearing gloves. The durable metal construction provides added strength when adjusting and calibrating.



### HINGED PULL HANDLE

Made of aluminium the profile provides ergonomical features to hold and push large equipment safely.



### ALUMINIUM KNOB

Star knobs provides a firm and secure grip with quick adjustment. The simple design allows easy cleaning.



### BALL KNOBS - ROUND

Round ball knobs give a dressed-up look to a wide range of applications including machine tools, jigs, and fixtures. These smooth round knobs are available in a variety of materials, colours, and finishes suitable for displays or decorative uses.

**CLICK FOR A QUOTE**  
4 HOURS OR LESS



Click Product to  
SHOP NOW!

## PRECISION INSTRUMENTS

Also known as test indicators, dial indicators are frequently used to measure machinery calibrations and equipment tolerances. Digital indicators measure small distances between two surfaces that a standard gauge cannot reach. These precision instruments, available in digital and analog display, translate the small linear distance into rotational movement and display the measurement on a continuous dial or LED readout.

Digital calipers are precision measuring devices used to measure linear dimensions, thickness, and diameter. These devices have upper and lower parallel jaws that perform measurement with extreme accuracy and the output appears on an electronic LCD display.



DIGITAL INDICATORS



DIGITAL CALIPERS



DIGITAL THICKNESS GAUGE



STAINLESS STEEL RULES



## FASTENERS

[CLICK FOR A QUOTE](#)  
4 HOURS OR LESS

Ensure the quality and life of your product with fasteners in the sizes and tolerances you need, designed to work for just about every application.



### BALL LOCK PINS

- 17-4 PH Stainless



### SOCKET HEAD SET SCREWS

- 18-8 Stainless Steel



### LANYARDS

- 303 Stainless Steel



### SOCKET HEAD CAP SCREWS

- 302 Stainless



### THREAD INSERTS

- 303 Stainless Steel



### SHOULDER SCREWS

- 303 Stainless





# CASTERS

**Click Product to SHOP NOW!**

ER WAGNER



### SYNTHETIC NON MARKING RUBBER CASTERS

Grey or white Synthetic non marking Rubber Tyre, Zinc Plated Steel Housing.

### CASTER WHEELS

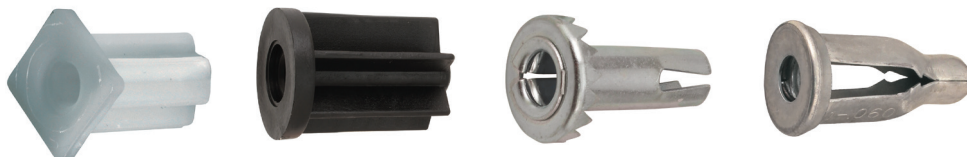
- A full range of light to heavy duty castors suitable for use in a variety of medical equipment applications
- Plastic rubber tyre not resistant to contact with greases, oils or Chlorides.
- Good resistance to corrosion and rust, water and chemicals

# FERRITES

ER WAGNER

### FERRITE SLEEVES

Ferrite sleeves are used as suppression cores for round cables and are available for a wide range of cable diameters. Installed around a cable, these A5 material cores, attenuate any form of EMI emission.



# SOLUTIONS THAT MAKE A DIFFERENCE

## WHY REID SUPPLY?

Our extensive line of precision instruments, knobs, handles, fasteners, plungers and material handling products represents the top names in medical manufacturing components, like Vlier, Destaco, DimcoGray, Mitutoyo, and Kipp. Our large selection and easy online ordering is complemented by our best-in-class technical support and hassle-free customer service. We'll fill your order quickly with on-time delivery, you won't even skip a beat.

We are specialists in meeting the needs of medical manufacturing product applications including:

- > Clamps and workholding easy-to-use options for fixture building/testing, welding and assembly operations.
- > Ball detent pins used in braking mechanisms found in common diagnostic equipment.
- > Hygienic leveling mounts provide stability to MRI, CAT Scan, surgical tables and oncology treatment delivery systems.

**LET US HELP FIND THE RIGHT MEDICAL  
MANUFACTURING PARTS FOR YOUR NEEDS**

Call us at **1.800.253.0421** or send an email to **[sales@reidsupply.com](mailto:sales@reidsupply.com)**.







OVER  
**73**  
YEARS  
IN BUSINESS

OVER  
**320**  
REPUTABLE  
BRANDS

OVER  
**45,000**  
PRODUCTS  
OFFERED

## WHO IS REID SUPPLY?

Since 1948, Reid Supply is a premiere provider of branded and private label industrial parts and supplies to the U.S. manufacturing market.

## MIDWEST VALUES WITH GLOBAL RESOURCES

Reid Supply is based in West Michigan, and is part of Essentra Company, a globally owned corporation that operates in 33 countries around the world.

With our Midwestern values and global resources, we are able to provide a relationship driven model that allows for growth while offering our customers a trusted, long-term, partnership.

## REASONS TO PARTNER WITH REID SUPPLY

Consistent quality. Expert technical support. An extensive range. Unmatched customer support.

These are some of the reasons why players in the manufacturing market turn to us for their needs. Just some examples include:

- > Free 3D CAD drawings
- > Hassle-free customer service
- > Finding the hard-to-find parts
- > Same day shipping on stock items
- > Most quotes in 4 hours or less

**NOBODY WILL SERVE THE CUSTOMER BETTER.**



## LET'S TALK

For more information contact us:

 1.800.253.0421

 [sales@reidsupply.com](mailto:sales@reidsupply.com)

